

# FPCheck

Cost effective system and service for applicant fingerprint check enrollment

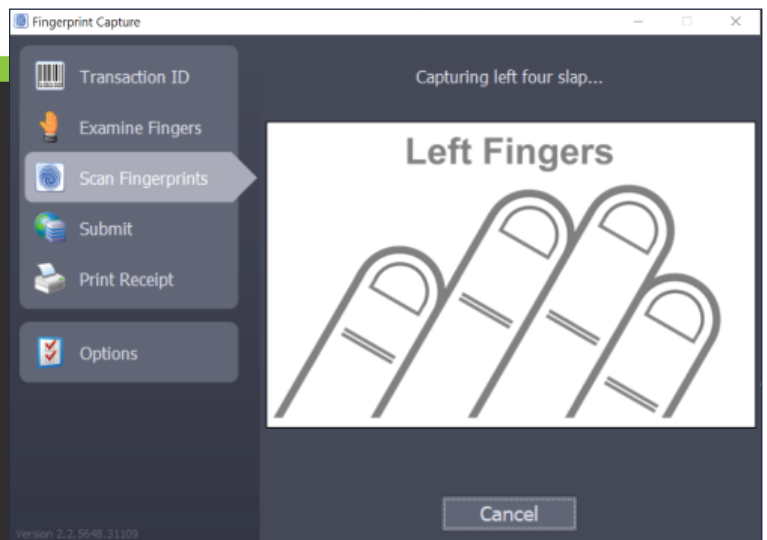
- Optional: purchase and install system
- Enter demographic data online
- Scan fingerprints at FPCheck site
- EBTS file delivered electronically, or via an FD-258 card

**Advanced features** seamlessly delivered in secure internet based solution.

- Two simple, intuitive interfaces - one browser based and one installed application
- Supports OPM and SWFT transactions; other types of transactions easily supported
- Electronic fingerprint capture via livescan and/or card scan
- Fingerprint card printing at central location
- EBTS file delivery via encrypted email
- Low purchase price and transaction fees
- When you provide scanning services, we pay you a portion of the scanning fee
- Transaction fees billed monthly

## For additional information

P: 540.953.1365      Identification International, Inc.  
F: 540.953.3344      3120 Commerce Street  
E: sales@idintl.com      Blacksburg, VA, USA 24060  
[www.idintl.com](http://www.idintl.com)



## Features

- Standards conforming EBTS file format
- Supported on Windows 7 through 10
- Installed application runs on Intel i3 processor or newer, 8GB RAM, 20 GB HDD space
- i3 digID mini+ and Epson flatbed scanners
- Extreme ease of use
- Real-time fingerprint quality feedback
- Use your printer for receipts
- Simple revenue sharing model
- No maintenance, support or warranty fees
- Time-proven hardware and software

*Call for more information and to see if FPCheck is available to you.*

